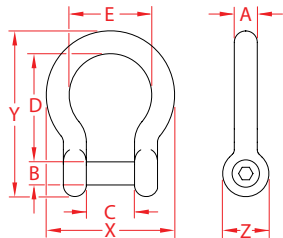


BOW SHACKLE WITH NO SNAG PIN

316 STAINLESS STEEL



Import



Precision
Cast

ITEM	A (size)	B	C	D	E	X (height)	Y (length)	Z (width)	WLL (lb)	WT (lb)	PACKAGING TYPE	EACH (qty)	INNER (qty)	CARTON (qty)	UPC
S0116-NS06	1/4"	0.24"	0.47"	1.06"	0.80"	1.29"	1.63"	0.46"	750	0.05	POLYBAG	1	10	500	791506030300
S0116-NS08	5/16"	0.31"	0.67"	1.46"	1.05"	1.76"	2.23"	0.63"	1,000	0.15	POLYBAG	1	10	200	791506030317
S0116-NS10	3/8"	0.39"	0.79"	1.77"	1.25"	2.17"	2.73"	0.76"	1,200	0.28	POLYBAG	1	10	150	791506030324
S0116-NS12	15/32"	0.48"	0.94"	2.16"	1.60"	2.56"	3.31"	0.92"	1,500	0.45	POLYBAG	1	1	80	791506030331
S0116-NS13	1/2"	0.51"	1.04"	2.33"	1.85"	2.95"	3.70"	1.08"	2,500	0.74	POLYBAG	1	1	25	791506030348
S0116-NS16	5/8"	0.63"	1.25"	3.00"	2.10"	3.41"	4.52"	1.25"	3,000	1.10	POLYBAG	1	1	25	791506030355
S0116-NS20	3/4"	0.74"	1.50"	3.34"	2.55"	4.15"	5.30"	1.46"	4,000	1.86	POLYBAG	1	1	20	791506030362
S0116-NS22	7/8"	0.86"	1.72"	3.85"	2.90"	4.69"	6.00"	1.71"	5,000	2.85	POLYBAG	1	1	10	791506030379
S0116-NS25	1"	0.96"	1.95"	4.42"	3.25"	5.26"	6.57"	1.91"	6,000	4.04	POLYBAG	1	1	5	791506030386

NOTE:

NO SNAG PIN SITS FLUSH WITH BODY OF SHACKLE. LARGER SIZES WITH SLOTTED HEAD. SUNCOR RECOMMENDS THE USE OF A LOCKING FLUID WITH THIS TYPE OF SHACKLE. ALL DIMENSIONS ARE NOMINAL (+/- 3%) AND ARE SUBJECT TO CHANGE WITHOUT NOTICE.